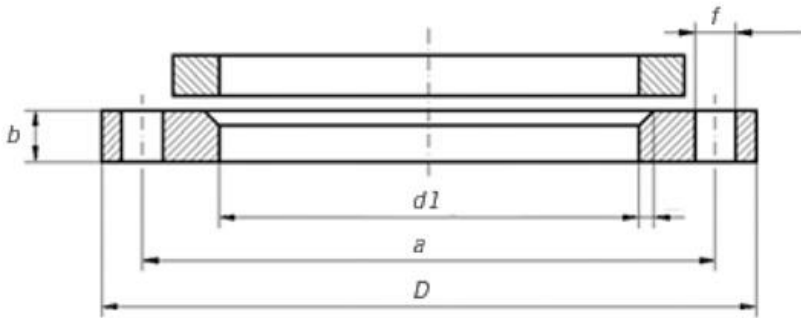




EN 1092-1 TYPE 02 LOOSE FLANGE PN10, PN16



EN 1092-1 TYPE 02 PN10 LOOSE FLANGE									
Rated Diameter	Flange					Screws			Weight (7,85 Kg/dm3)
	d1	k	D	b	e	d2	Thread	Bolt holes	KG
15	25	65	95	14	3	14	M12	4	0,654
20	31	75	105	16	4	14	M12	4	0,913
25	38	85	115	16	4	14	M12	4	1,081
32	47	100	140	18	5	18	M16	4	1,781
40	53	110	150	18	5	18	M16	4	2,035
50	65	125	165	20	5	18	M16	8	2,520
65	81	145	185	20	6	18	M16	8	3,050
80	94	160	200	20	6	18	M16	8	3,480
100	120	180	220	22	6	18	M16	8	4,200
125	145	210	250	22	6	18	M16	8	5,210
150	174	240	285	24	6	22	M20	8	6,890
200	226	295	340	24	6	22	M20	8	8,870
250	281	350	395	26	8	22	M20	12	11,200
300	333	400	445	26	8	22	M20	12	12,800
350	365	460	505	30	8	22	M20	16	19,400
400	416	515	565	32	8	26	M24	16	26,400
450	467	565	615	36	8	26	M24	20	32,200
500	519	620	670	38	8	26	M24	20	38,500
600	622	725	780	42	8	30	M27	20	52,200
700	721	840	895	50	8	30	M27	24	79,400
800	824	950	1015	56	8	33	M30	24	112,000
900	926	1050	1115	62	8	33	M30	28	135,000

1000	1028	1160	1230	70	8	36	M33	28	180,000
1. SURFACE FINISH FACING TYPES A, B1, B2 etc									
2. FLANGE MARKING: LOGO EN 1092-1 / 02 / DN100 / PN6 / P245GH / HEAT NUMBER									

EN 1092-1 TYPE 02 PN16 LOOSE FLANGE

Rated Diameter	Flange					Screws			Weight (7,85 Kg/dm3)
	d1	k	D	b	e	d2	Thread	Bolt holes	KG
15	25	65	95	14	3	14	M12	4	0,655
20	31	75	105	16	4	14	M12	4	0,913
25	38	85	115	16	4	14	M12	4	1,081
32	47	100	140	18	5	18	M16	4	1,781
40	53	110	150	18	5	18	M16	4	2,035
50	65	125	165	20	5	18	M16	4	2,668
65	81	145	185	20	6	18	M16	4	3,241
80	94	160	200	20	6	18	M16	8	3,512
100	120	180	220	22	6	18	M16	8	4,247
125	145	210	250	22	6	18	M16	8	5,258
150	174	240	285	24	6	22	M20	8	6,945
200	226	295	340	26	6	22	M20	12	9,383
250	281	355	405	29	8	26	M24	12	13,717
300	333	410	460	32	8	26	M24	12	18,213
350	365	470	520	35	8	26	M24	16	27,184
400	416	525	580	38	8	30	M27	16	34,789
450	467	585	640	42	8	30	M27	20	44,793
500	519	650	715	46	8	33	M30	20	62,227
600	622	770	840	55	8	36	M33	20	98,983
700	721	840	910	63	8	36	M33	24	107,32
800	824	950	1025	74	8	39	M36	24	152,44
900	926	1050	1125	82	8	39	M36	28	184,25
1000	1030	1170	1255	90	8	42	M39	28	257,09

1. SURFACE FINISH FACING TYPES A, B1, B2 etc

2. FLANGE MARKING: LOGO EN 1092-1 / 02 / DN100 / PN16 / P245GH / HEAT NUMBER

