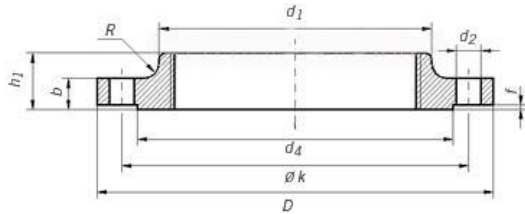




DIN 2566 PN16 THREADED FLANGE

SCREWED FLANGE



1. Standard: DIN2566
2. Type: Threaded flange
3. Pressure: PN16
4. Size: DN15 – DN150, larger Sizes available on request
5. Raw Material: P245GH, P250GH, P265GH, C22.8, S235JR
6. Process: Forged
7. Basic requirements for Material and Flange

GERMANY STANDARD FLANGE DIN 2566 FOR WELDING PN 16													
Rated Diameter	Flange						Neck	Raised face		Screws			Weight (7,85 Kg/dm3)
	d1	Thread	D	b	k	h1	d3	d4	f	Holes	Thread	d2	Kg
15	21,3	R 1/2	95	14	65	20	35	45	2	4	M 12	14	0,613
20	26,9	R 3/4	105	16	75	24	45	58	2	4	M 12	14	0,91
25	33,7	R 1	115	16	85	24	52	68	2	4	M 12	14	1,1
32	42,4	R 1 1/4	140	16	100	26	60	78	2	4	M 16	18	1,6
40	48,3	R 1 1/2	150	16	110	26	70	88	3	4	M 16	18	1,78
50	60,3	R 2	165	18	125	28	85	102	3	4	M 16	18	2,43
65	76,1	R 2 1/2	185	18	145	32	105	122	3	4	M 16	18	3,18
80	88,9	R 3	200	20	160	34	118	138	3	8	M 16	18	4,12
100	114,3	R 4	220	20	180	38	140	158	3	8	M 16	18	4,47
125	139,7	R 5	250	22	210	40	168	188	3	8	M 16	18	6,13
150	165,1	R 6	285	22	240	44	195	212	3	8	M 20	22	7,92