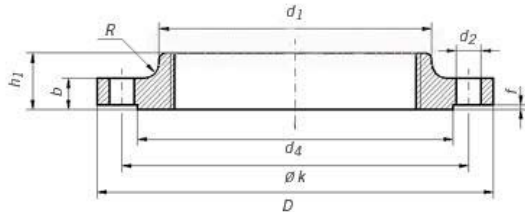




DIN 2565 PN6 THREADED FLANGE

SCREWED FLANGE



1. Standard: DIN2565
2. Type: Threaded flange
3. Pressure: PN6
4. Size: DN15 – DN150, larger Sizes available on request
5. Raw Material: P245GH, P250GH, P265GH, C22.8, S235JR
6. Process: Forged
7. Basic requirements for Material and Flange

GERMANY STANDARD FLANGE DIN 2565 FOR WELDING PN 6

Rated Diameter	Flange						Neck	Raised face	Screws			Weight (7,85 Kg/dm ³)	
	d1	Thread	D	b	k	h1	d3	d4	f	Holes	Thread	d2	Kg
15	21,3	R 1/2	80	12	55	20	30	40	2	4	M 10	11	0,373
20	26,9	R 3/4	90	14	65	24	40	50	2	4	M 10	11	0,59
25	33,7	R 1	100	14	75	24	50	60	2	4	M 10	11	0,743
32	42,4	R 1 1/4	120	14	90	26	60	70	2	4	M 12	14	1,05
40	48,3	R 1 1/2	130	14	100	26	70	80	3	4	M 12	14	1,2
50	60,3	R 2	140	14	110	28	80	90	3	4	M 12	14	1,37
65	76,1	R 2 1/2	160	14	130	32	100	110	3	4	M 12	14	1,92
80	88,9	R 3	190	16	150	34	110	128	3	4	M 16	18	2,82
100	114,3	R 4	210	16	170	38	130	148	3	4	M 16	18	3,19
125	139,7	R 5	240	18	200	40	160	178	3	8	M 16	18	4,47
150	165,1	R 6	265	18	225	44	185	202	3	8	M 16	18	5,3