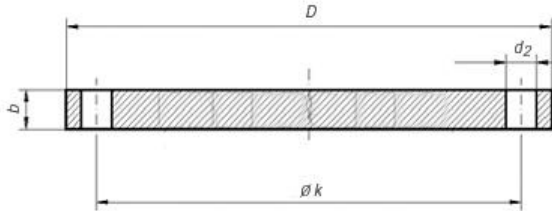




# DIN 2527 BLIND FLANGE

PN6,PN10,PN16,PN25,PN40



1. Standard: DIN2527
2. Type: Blind flange
3. Pressure: PN6,PN10,PN16,PN25,PN40
4. Size: DN15 – DN500, larger Sizes available on request
5. Raw Material: P245GH, P250GH, P265GH, C22.8, S235JR
6. Process: Forged
7. Basic requirements for Material and Flange

GERMANY STANDARD FLANGE DIN 2527 FOR WELDING PN 6							
Rated Diameter	Flange			Screws			Weight (7,85 Kg/dm <sup>3</sup> )
	D	b	k	Number	Thread	d2	Shape B
							Kg
15	80	12	55	4	M 10	11	0.44
20	90	14	65				0.66
25	100	14	75				0.83
32	120	14	90				1.18
40	130	14	100		M 12	14	1.39
50	140	14	110				1.63
65	160	14	130				2.15
80	190	16	150	8	M 16	18	3.44
100	210	16	170				4.22
125	240	18	200				6.11
150	265	18	225				7.51
200	320	20	280				12.31
250	375	22	335	12	M 20	22	18.54
300	440	22	395				25.46
350	490	22	445				31.77
400	540	22	495				38.49
500	645	24	600				60.10

**GERMANY STANDARD FLANGE DIN 2527 FOR WELDING PN 10**

Rated Diameter	Flange			Screws			Weight (7,85 Kg/dm <sup>3</sup> )	
	D	b	k	Number	Thread	d2	Shape B	
							Kg	
15	95	14	65	4	M 12	14	0,72	
20	105	16	75				1,01	
25	115	16	85				1,23	
32	140	16	100				1,8	
40	150	16	110		M 16	18	2,09	
50	165	18	125				2,88	
65	185	18	145				3,66	
80	200	20	160				4,77	
100	220	20	180	8				5,65
125	250	22	210					8,42
150	285	22	240					10,4
200	340	24	295					16,5
250	395	26	350	12	M 20	22	24	
300	445	26	400				30,9	
350	505	26	460				40,6	
400	565	26	515	16	M 24	26	49,4	
500	670	28	620				20	75

**GERMANY STANDARD FLANGE DIN 2527 FOR WELDING PN 16**

Rated Diameter	Flange			Screws			Weight (7,85 Kg/dm3)
	D	b	k	Number	Thread	d2	Shape B
							Kg
15	95	14	65	4	M 12	14	0,72
20	105	16	75				1,01
25	115	16	85				1,23
32	140	16	100		M 16	18	1,8
40	150	16	110				2,09
50	165	18	125				2,88
65	185	18	145				3,66
80	200	20	160	8			4,77
100	220	20	180				5,65
125	250	22	210				8,42
150	285	22	240	12	M 20	22	10,4
200	340	24	295				16,1
250	405	26	355		16	M 24	26
300	460	28	410	35,1			
350	520	30	470	47,8			
400	580	32	525	20	M 27	30	63,5
500	715	36	650		M 30	33	102