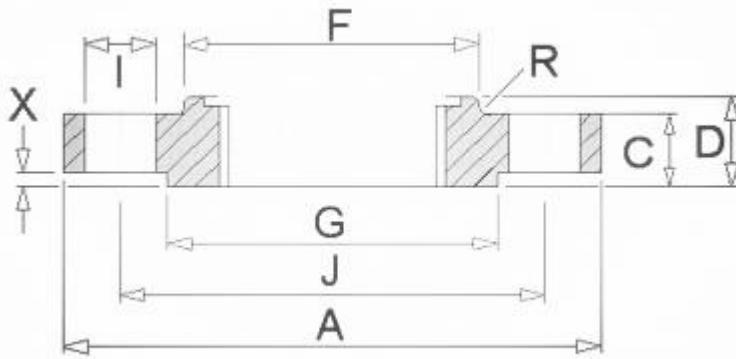




B16.5 THREADED FLANGE CLASS 150



ANSI, ASME, ASA, B16.5 150lb/sq.in. Threaded Flange NPT

Pipe		Flange Data				Hub Data	Raised Face	Drilling Data			Weight
Nominal Size	Outside Dia	A	C	D	E	F	G	H	I	J	Kg/ Piece
		Overall Dia	Flange Thickness min	Overall Length	Threaded Length min	Hub Dia	Face Dia		Number of Holes	Bolt Hole Dia	
	In Mm	In Mm	In Mm	In Mm	In Mm	In Mm	In Mm	In Mm	In Mm	In Mm	
½	0.84	3.50	0.440	0.620	0.620	1.190	1.38	4	0.62	2.38	0.39
	21.3	88.90	11.20	15.70	15.70	30.20	35.10		15.7	60.45	
¾	1.05	3.88	0.500	0.620	0.620	1.500	1.69	4	0.62	2.75	0.56
	26.7	98.60	12.70	15.70	15.70	38.10	42.9		15.7	69.85	
1	1.315	4.25	0.560	0.690	0.690	1.940	2	4	0.62	3.12	0.78
	33.4	108.00	14.20	17.50	17.50	49.30	50.8		15.7	79.25	
1 ¼	1.66	4.62	0.620	0.810	0.810	2.310	2.5	4	0.62	3.50	1.03
	42.2	117.30	15.70	20.60	20.60	58.70	63.5		15.7	88.90	
1 ½	1.9	5.00	0.690	0.880	0.880	2.560	2.88	4	0.62	3.88	1.32
	48.3	127.00	17.50	22.40	22.40	65.00	73.15		15.7	98.60	
2	2.375	6.00	0.750	1.000	1.000	3.060	3.62	4	0.75	4.75	2.06
	60.3	152.40	19.10	25.40	25.40	77.70	91.9		19.10	120.70	
2 ½	2.875	7.00	0.880	1.120	1.120	3.560	4.12	4	0.75	5.50	3.28
	73	177.80	22.40	28.40	28.40	90.40	104.6		19.10	139.70	
3	3.5	7.50	0.940	1.190	1.190	4.250	5	4	0.75	6.00	3.85
	88.9	190.50	23.90	30.20	30.20	108.00	127		19.10	152.40	

3 1/2	4	8.50	0.940	1.250	1.250	4.810	5.5	8	0.75	7.00	4.81
	101.6	215.90	23.90	31.75	31.75	122.20	139.7		19.10	177.80	
4	4.5	9.00	0.940	1.310	1.310	5.310	6.19	8	0.75	7.50	5.30
	114.3	228.60	23.90	33.30	33.30	134.90	157.2		19.10	190.50	
5	5.563	10.00	0.940	1.440	1.440	6.440	7.31	8	0.88	8.50	6.07
	141.3	254.00	23.90	36.60	36.60	163.60	185.7		22.40	215.90	
6	6.625	11.00	1.000	1.560	1.560	7.560	8.5	8	0.88	9.50	7.45
	168.3	279.40	25.40	39.60	39.60	192.00	215.9		22.40	241.30	
8	8.625	13.50	1.120	1.750	1.750	9.690	10.62	8	0.88	11.75	12.10
	219.1	342.90	28.40	44.50	44.50	246.10	269.7		22.40	298.50	
10	10.75	16.00	1.190	1.940	1.940	12.00	12.75	12	1.00	14.25	16.50
	273	406.40	30.20	49.30	49.30	304.80	323.8		25.40	362.00	
12	12.75	19.00	1.250	2.190	2.190	14.380	15	12	1.00	17.00	26.20
	323.8	482.60	31.75	55.60	55.60	365.30	381		25.40	431.80	
14	14	21.00	1.380	2.250	2.250	15.750	16.25	12	1.12	18.75	34.60
	355.6	533.40	35.10	57.15	57.15	400.10	412.7		28.40	476.30	
16	16	23.50	1.440	2.500	2.500	18.00	18.5	16	1.12	21.25	44.80
	406.4	596.90	36.60	63.50	63.50	457.20	469.9		28.40	539.80	
18	18	25.00	1.560	2.690	2.690	19.880	21	16	1.25	22.75	48.90
	457.2	635.00	39.60	68.30	68.30	505.00	533.4		31.75	577.90	
20	20	27.50	1.690	2.880	2.880	22.00	23	20	1.25	25.00	61.90
	508	698.50	42.90	73.15	73.15	558.80	584.2		31.75	635.00	
24	24	32.00	1.880	3.250	3.250	26.120	27.25	20	1.38	29.50	86.90
	609.6	812.80	47.80	82.60	82.60	663.40	692.1		35.10	749.30	

NOTE:

1. The thread conforms to ASME B1.20.1 NTP threads as described in Section 10. (The only exceptions are small male and female plain face threaded flanges which use NPSL recount threads.)

2. Class 150 threaded flanges are made without a counterbore. Threads are chamfered to the major diameter (approx.) at an angle of 45° (approx.) at the back of the flange.

3. Weights are based on manufacturer's data and are approximate.

4. For tolerances +0.5mm.

